



# Tenderheart Bear™

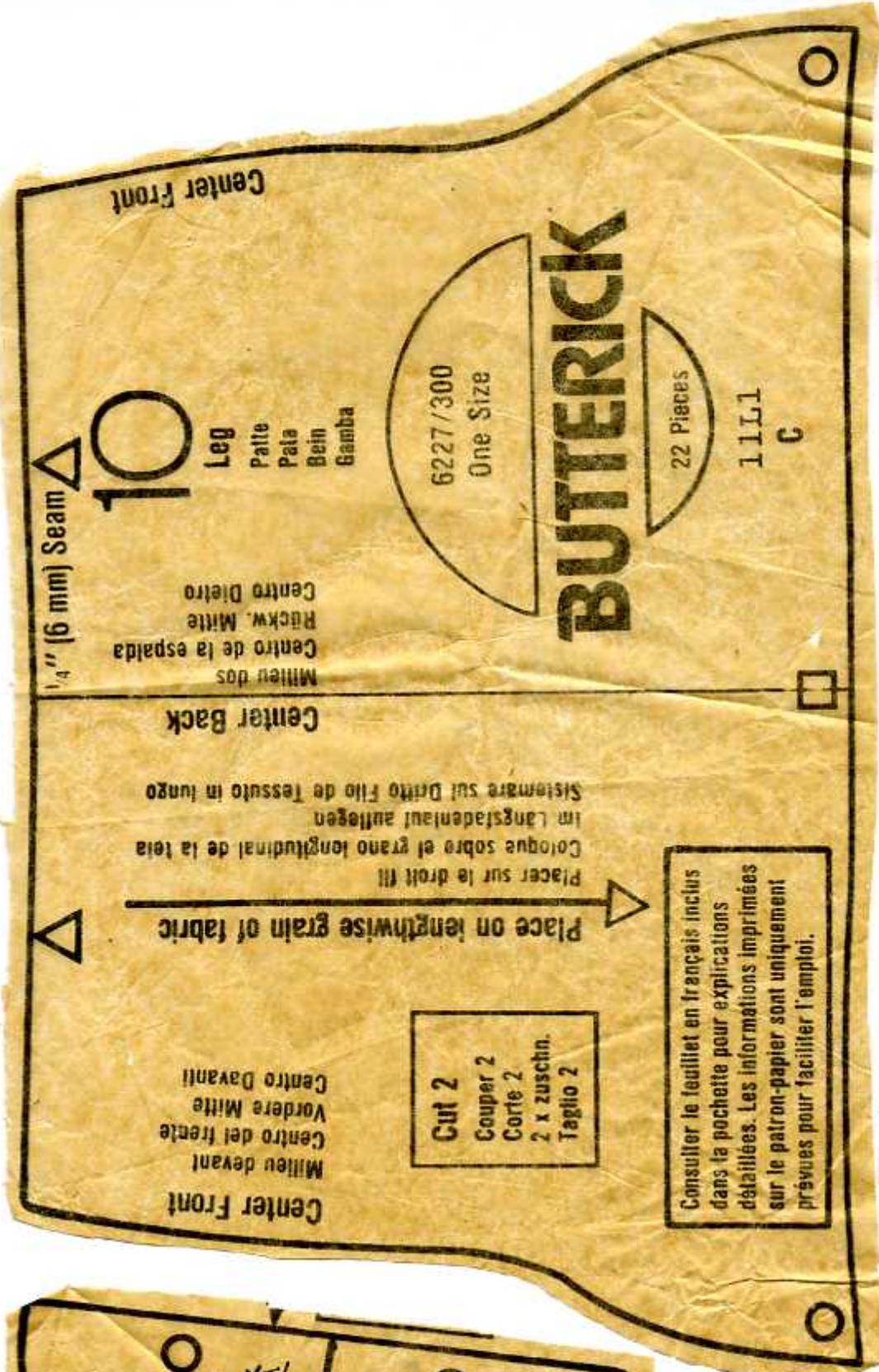
6227



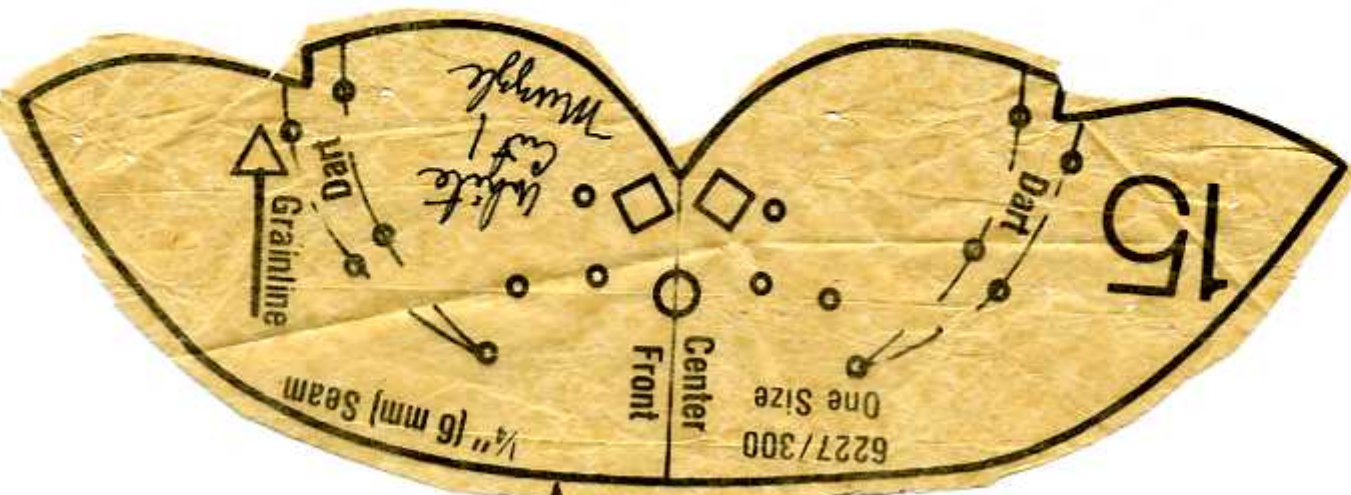
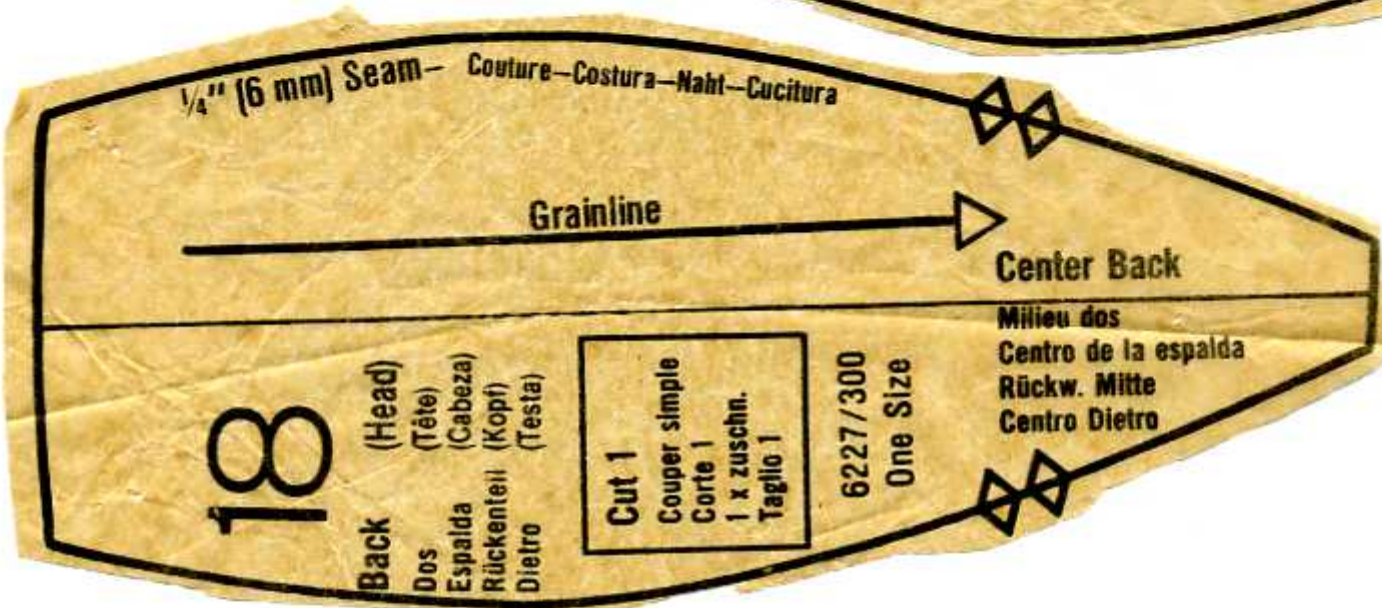
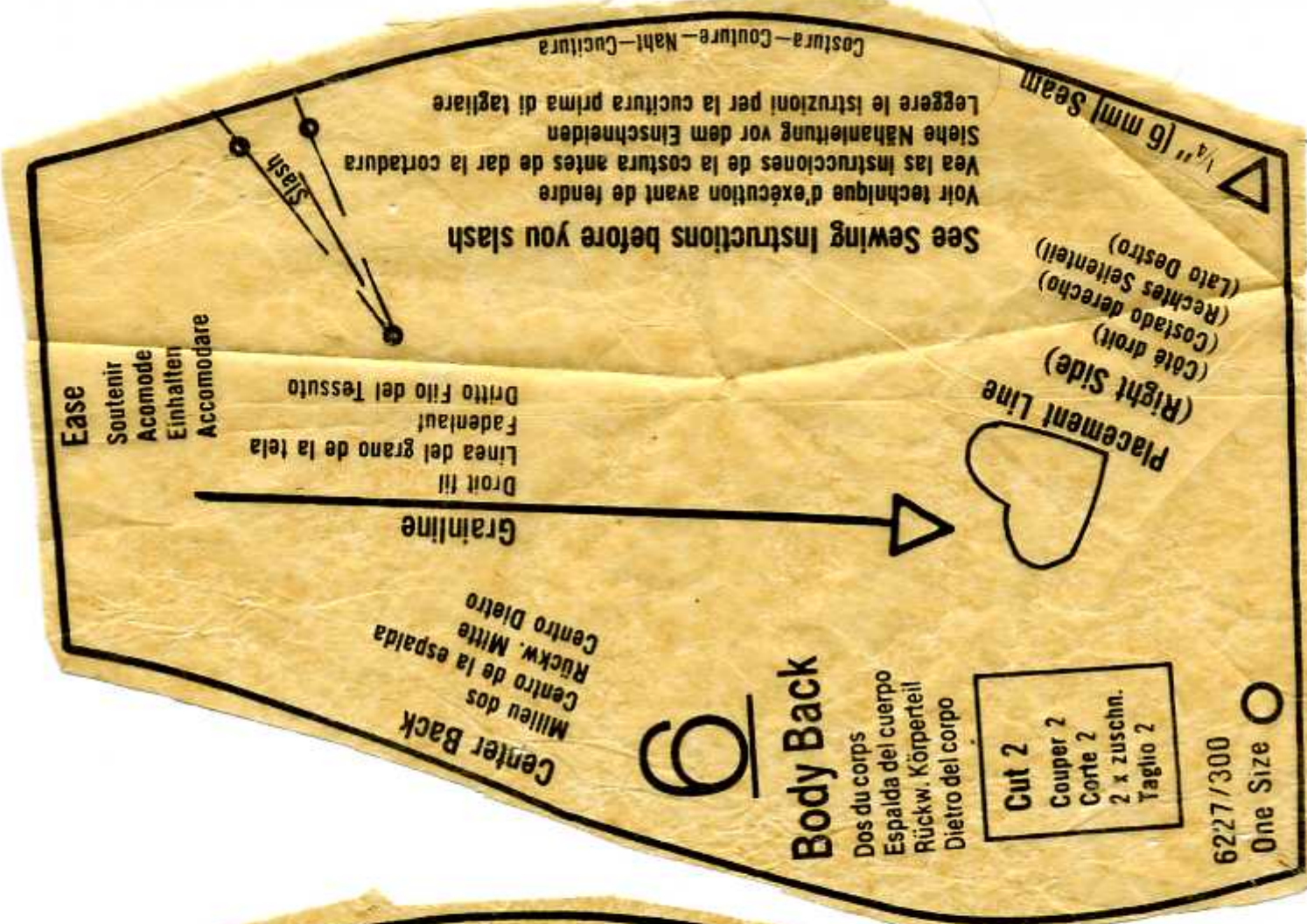
**BUTTERICK**

Care Bear Trademarks and Characters  
© MCMLXXXIII American Greetings Corporation

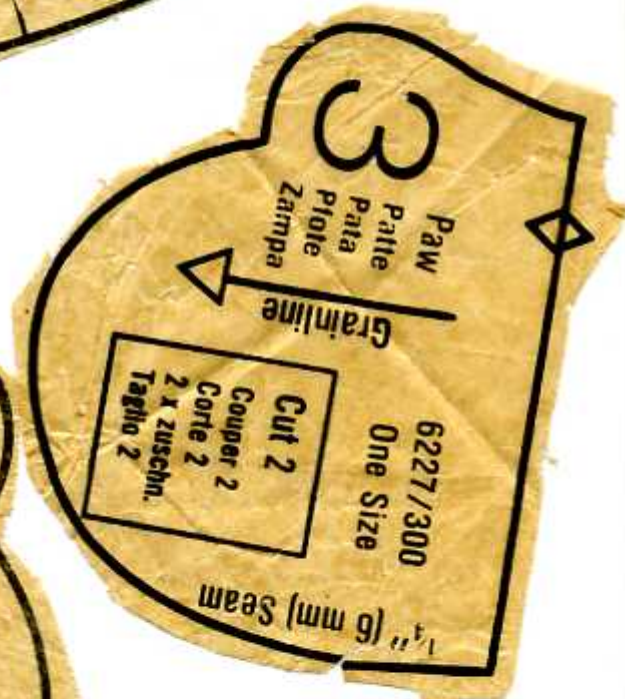
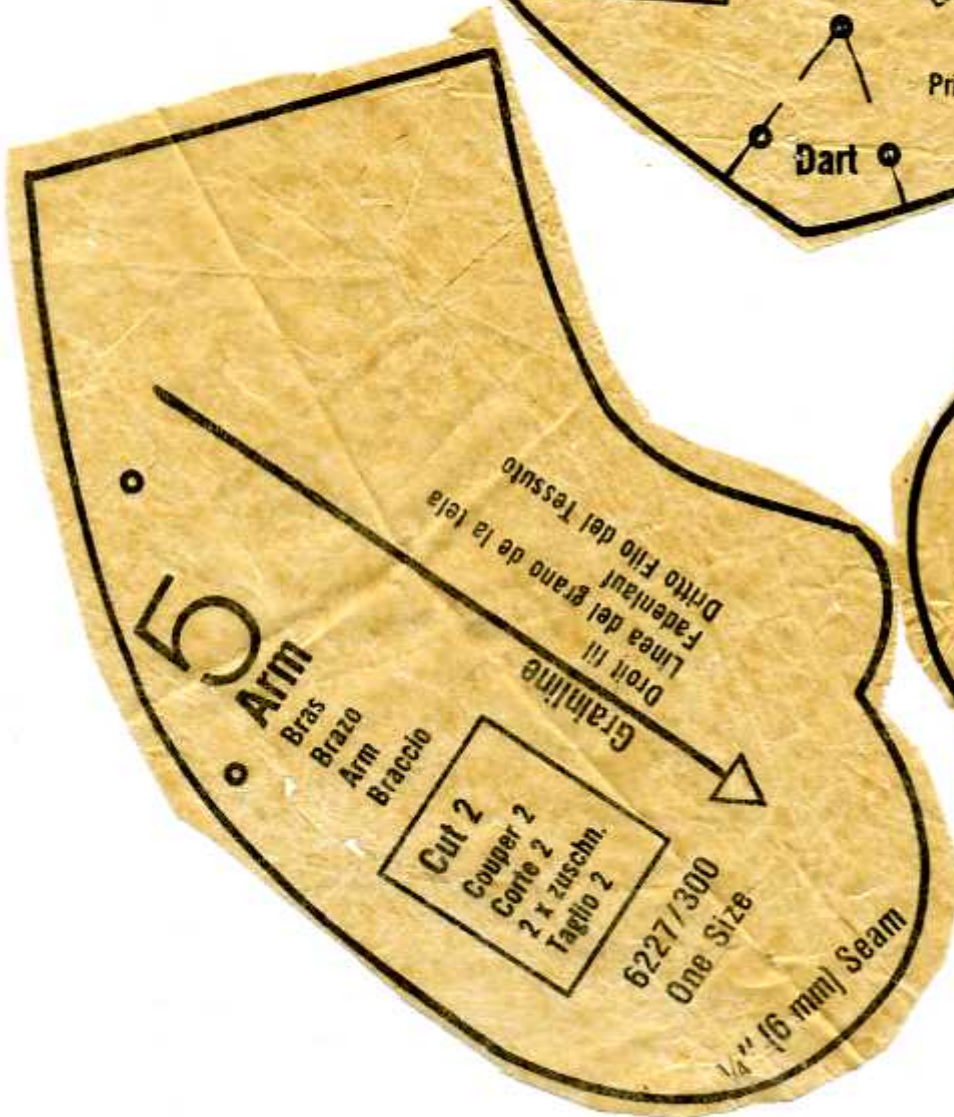
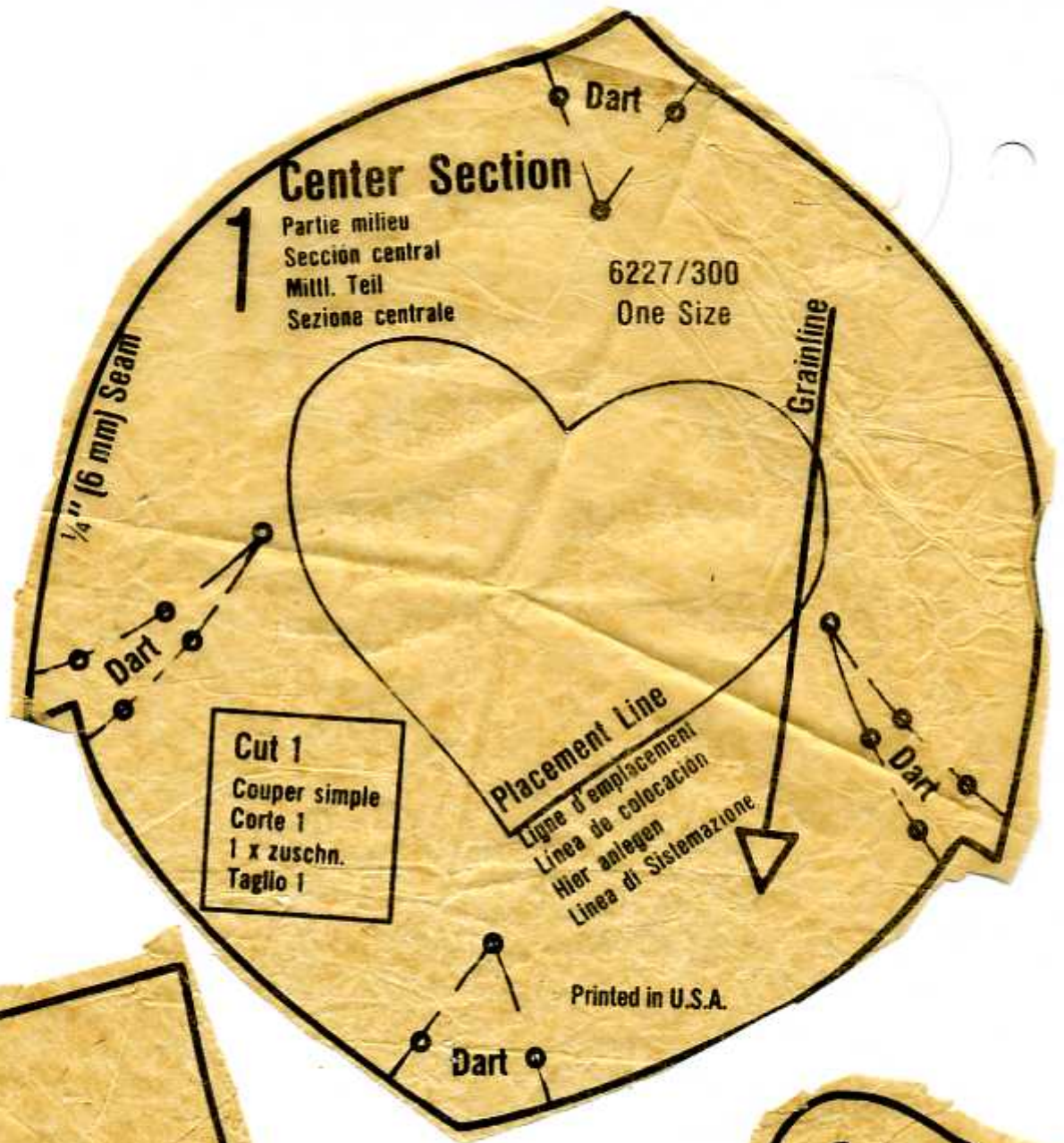




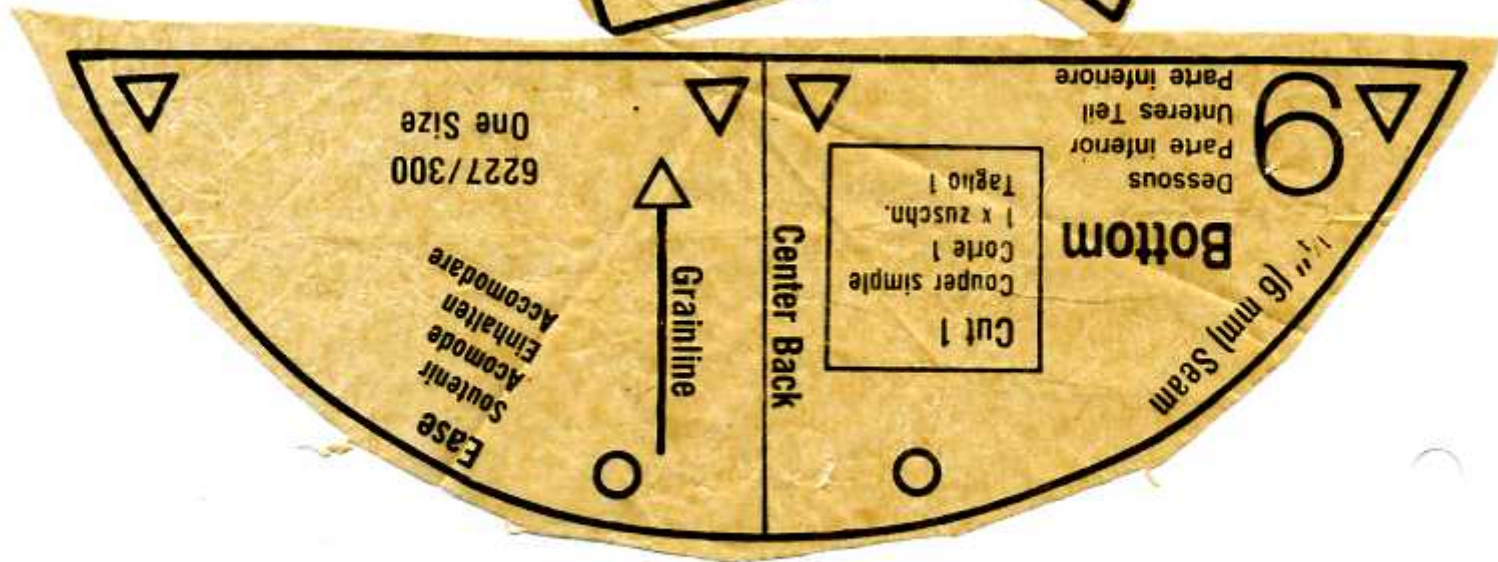
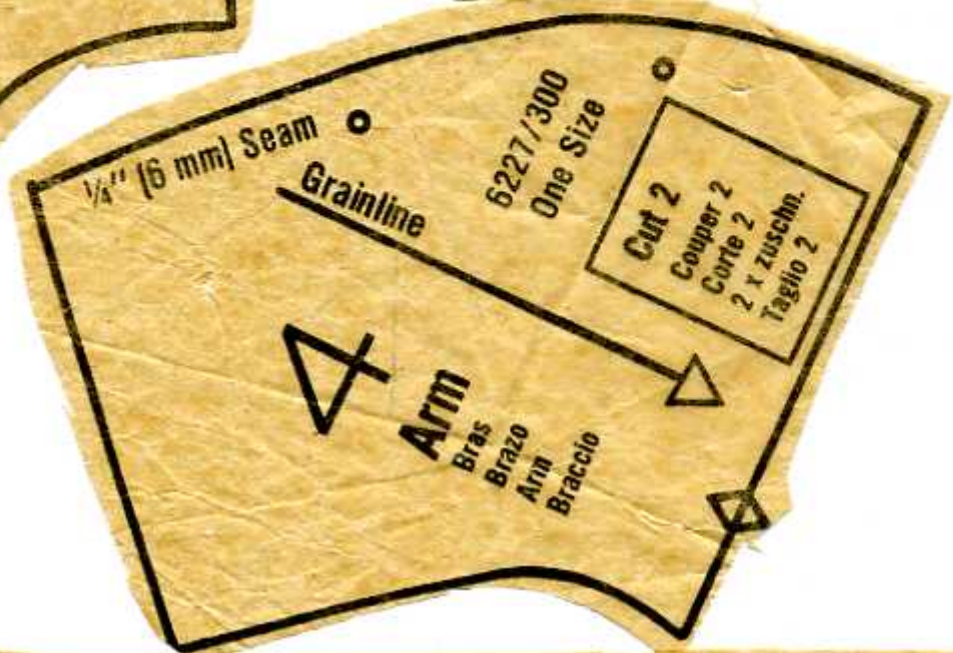




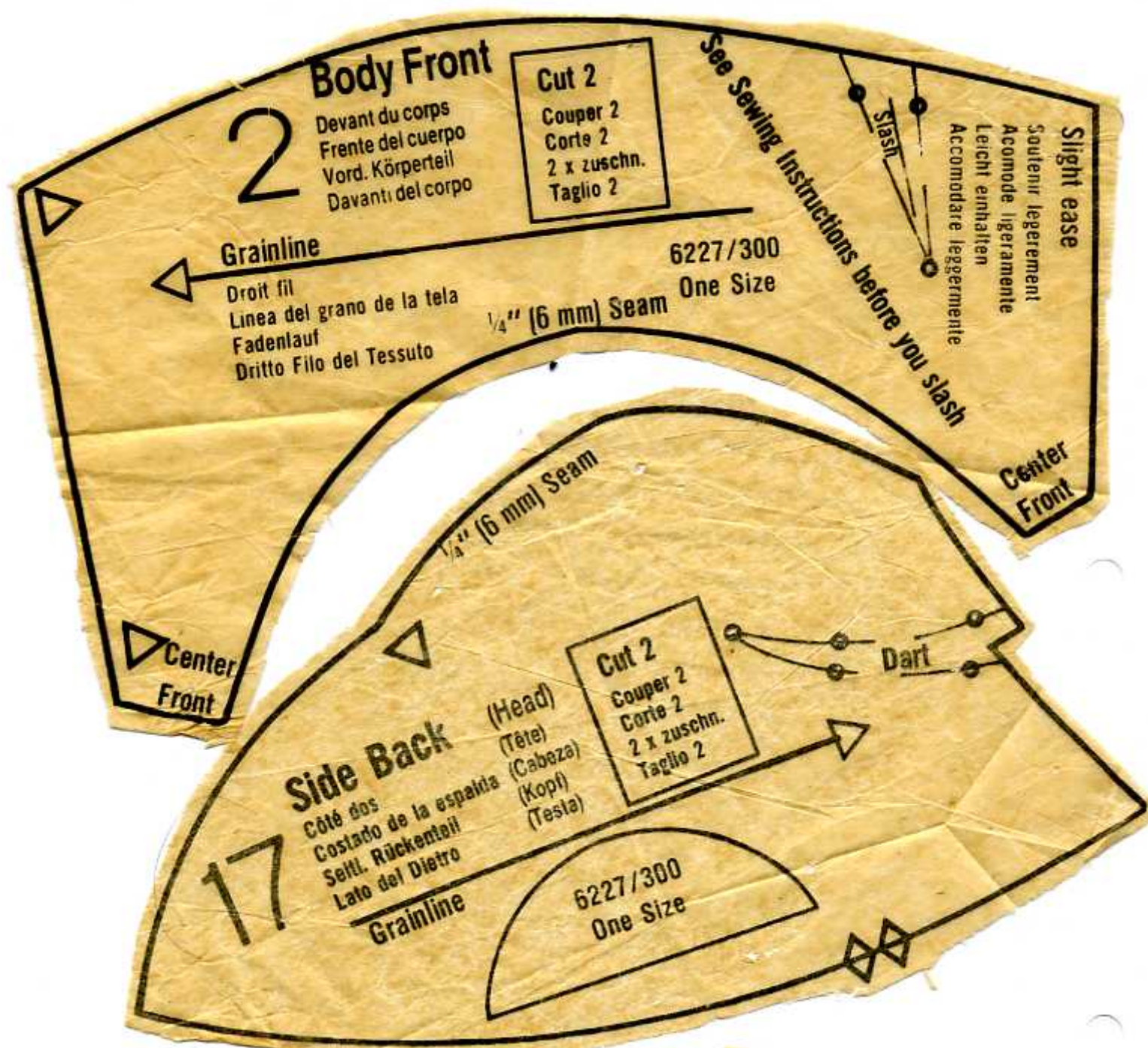










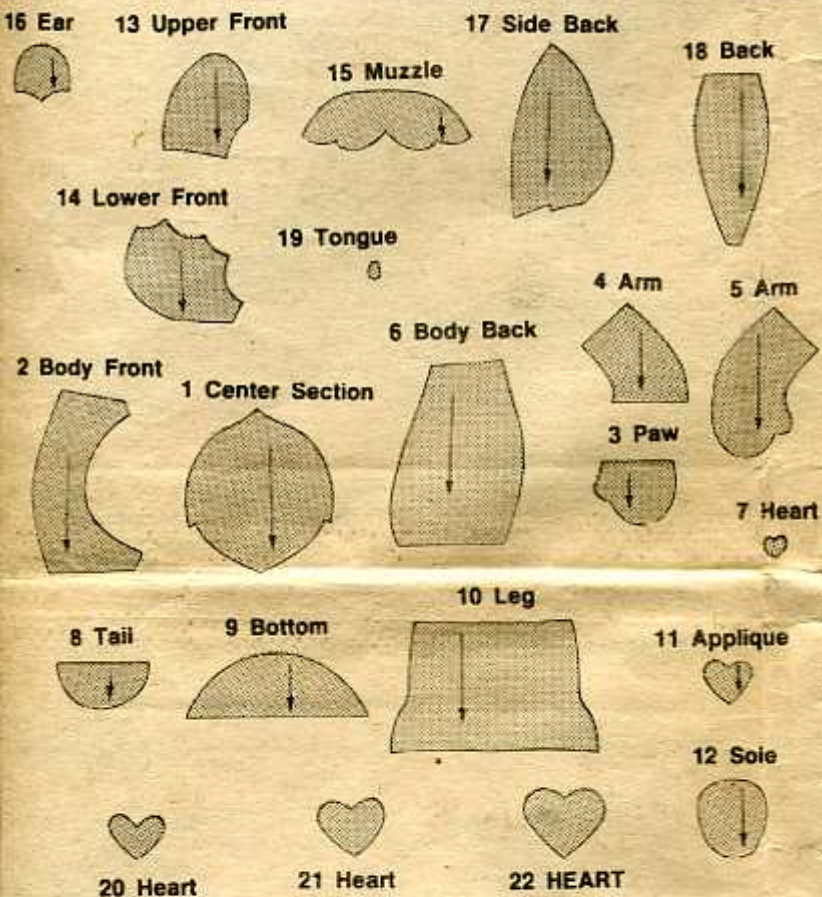




# BUTTERICK 6227/300



TENDERHEART BEAR™



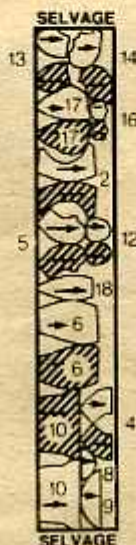
## BEAR

use pieces: 2,4,5,6,8,9,10,12,13,14,16,17 and 18

29"(74cm)  
WITH NAP



60"(150cm)  
WITH NAP

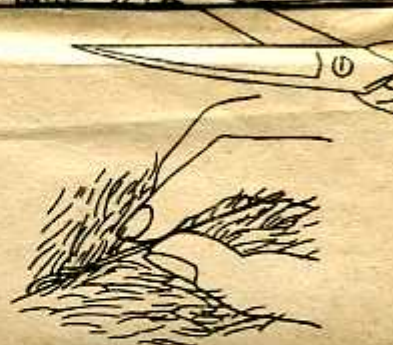


## SEWING INFORMATION FOR FUR PILE

• Before stitching seams, trim fur pile in seam allowance as short as possible.



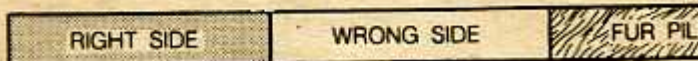
• When stitching, keep untrimmed fur pile away from seam allowance. Any fur pile caught in seam allowance may be picked out with a pin.



Unless otherwise indicated:

- All seam allowances are 1/4"(6mm).
- Stitch all seams with right sides together.
- Finger press all seams open.
- Match large ●'s, small ●'s, ■'s,▲'s and corresponding notches.

## FABRIC ILLUSTRATION KEY



There will be no indication for RIGHT SIDE or WRONG SIDE of Felt.

## GLOSSARY

FRENCH KNOT



## GENERAL INSTRUCTIONS FOR CUTTING FUR PILE

READ ALL INSTRUCTIONS BEFORE BEGINNING TO WORK

### PREPARING THE PATTERN

**GRAINLINE FOR NAP FABRICS:** Arrow should be placed in the direction of fur pile. →

**GRAINLINE:** Place line on fabric an even distance from selvage or straight thread. ↔

**FOLD:** Indicates edge that is placed on fold of fabric. ↕

**CUTTING LINE:** Heavy outline indicates exact cutting line. —

### LAYOUTS AND CUTTING



trim fur pile in seam allowance as short as possible.



• When stitching, keep untrimmed fur pile away from seam allowance. Any fur pile caught in seam allowance may be picked out with a pin.

Unless otherwise indicated:

- All seam allowances are 1/4" (6mm).
- Stitch all seams with right sides together.
- Finger press all seams open.
- Match large ●'s, small ●'s, ■'s, ▲'s and corresponding

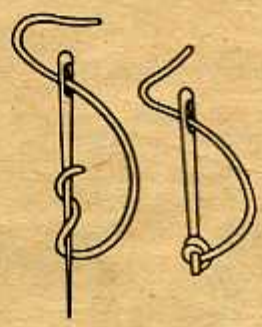
### FABRIC ILLUSTRATION KEY

RIGHT SIDE	WRONG SIDE	FUR
------------	------------	-----

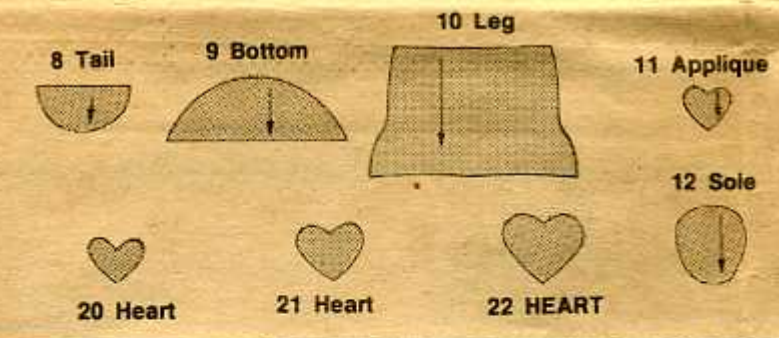
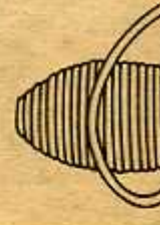
There will be no indication for RIGHT SIDE or WRONG SIDE of

### GLOSSARY

**FRENCH KNOT**



**SATIN STITCH**



## GENERAL INSTRUCTIONS FOR CUTTING FUR PILE

READ ALL INSTRUCTIONS BEFORE BEGINNING TO WORK  
**PREPARING THE PATTERN**

**GRAINLINE FOR NAP FABRICS:** Arrow should be placed in the direction of fur pile.

**GRAINLINE:** Place line on fabric an even distance from selvage or straight thread.

**FOLD:** Indicates edge that is placed on fold of fabric.

**CUTTING LINE:** Heavy outline indicates exact cutting line.

### LAYOUTS AND CUTTING

- Follow cutting layouts for arranging fabric and placement of pattern pieces.
- For **SINGLE THICKNESS**, place fabric right side up unless otherwise indicated.
- When **FOLD** is indicated, fold fabric right sides together.
- Place fur fabric pile side down on cutting surface.

### MARKING

- Before removing pattern from fabric, transfer all necessary markings.

### CUTTING LAYOUTS SHADING KEY





